



# GAT MONTHLY MEMBERSHIP PROGRESS REPORT

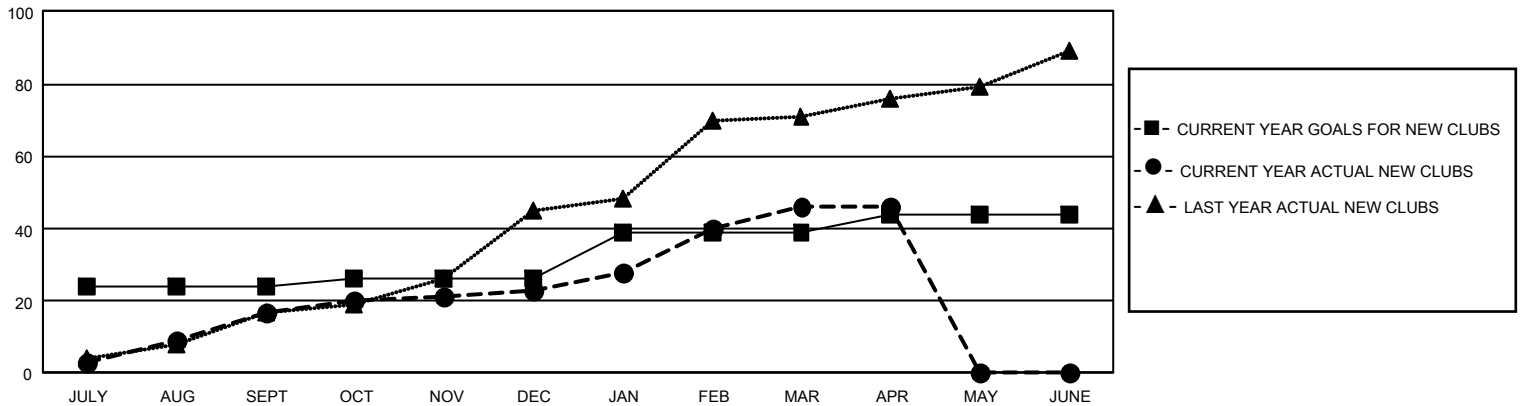
Results as of: 4/30/2025

## GMT Constitutional Area 6 - I, Group H

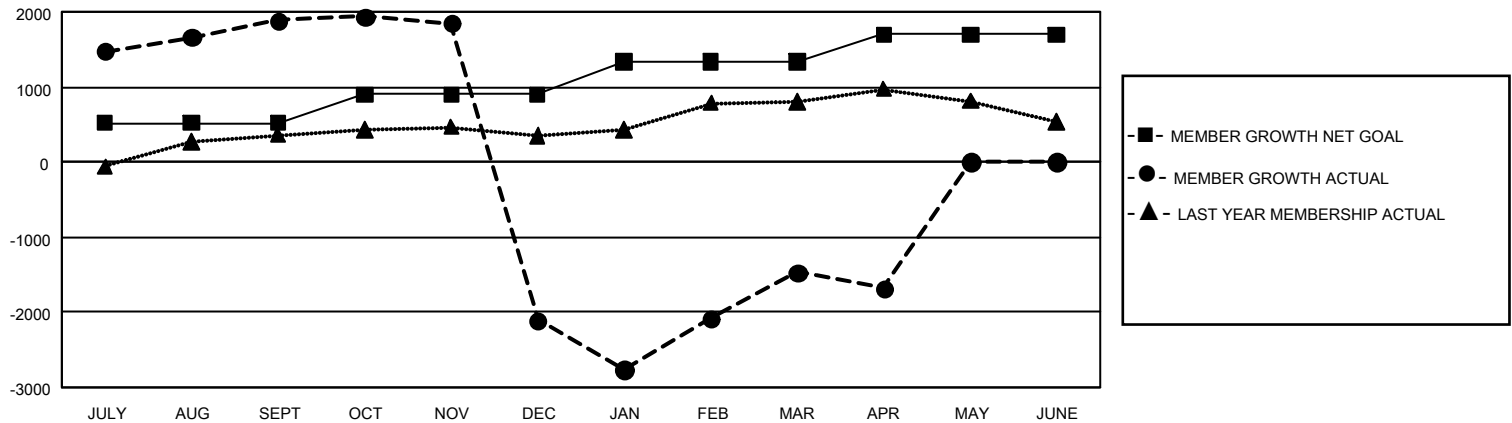
REPORT DOES NOT INCLUDE CLUBS IN UNDISTRICTED AREAS.

Clubs				Members			
RESULTS FOR 2024-2025				RESULTS FOR 2024-2025			
QUARTER	NEW CLUB GOAL	NEW CLUBS	DROPPED CLUBS	QUARTER	MEMBER GROWTH NET GOAL	MEMBER GROWTH ACTUAL	DROPPED MEMBERS ACTUAL (including transfers)
JULY/AUG/SEPT	72	17	5	JULY/AUG/SEPT	516	2,695	560
OCT/NOV/DEC	6	6	85	OCT/NOV/DEC	385	1,244	4,537
JAN/FEB/MAR	39	23	23	JAN/FEB/MAR	430	3,125	1,601
APR/MAY/JUNE	15	0	1	APR/MAY/JUNE	370	209	300

GOALS AND ACTUAL NEW CLUBS CUMULATIVE



GOALS AND ACTUAL MEMBERS CUMULATIVE



DROPPED CLUBS: 114

431 CLUBS OF 847 ADDED 1 OR MORE NEW MEMBERS

### GENDER DISTRIBUTION

MALE	18,054 (62.32%)
FEMALE	10,911 (37.66%)
NON BINARY	0 (0.00%)
PREFER NOT TO ANSWER	4 (0.01%)

### DROPPED MEMBERS

DECEASED	80
CLUB CANCELLED	3,042
OTHER	3,836
<b>TOTAL</b>	<b>6,958</b>

[CLICK HERE FOR CUMULATIVE MEMBERSHIP DATA](#)

TOTAL FAMILY UNIT MEMBERS 0

FAMILY MEMBERS PAYING HALF DUES 0